

5.2. Sustainable Rural Livelihoods Programme

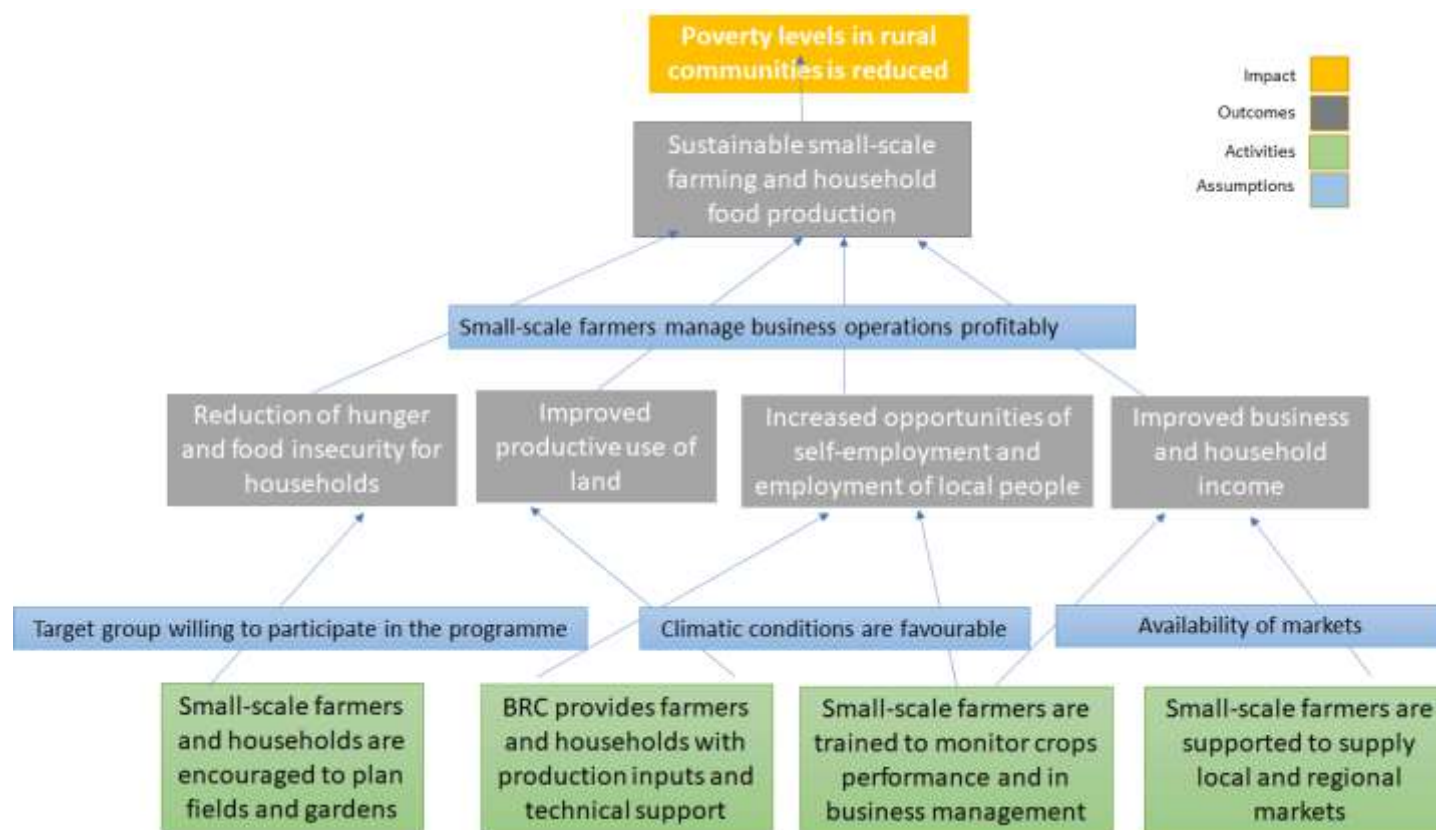


Figure 2: ToC for Support to small-scale farmers and household gardens programme

Narrative version of the ToC

IF small-scale farmers and household are encouraged to plant their fields and home gardens **AND** are willing to participate in the training and technical support **THEN** there would be reduction of hunger and food insecurity within households. **IF** BRC and its partners provide them with productions inputs and technical support **AND** are trained how to monitor their crop performance and in management of their enterprises **AND** the climatic conditions are favourable to their crops, **THEN** there would be improved productive use of land and quality of yields. **IF** small scale farmers are supported to supply their produce to local and regional markets **AND** markets are available to them on favourable terms, **THEN** there would be increased opportunities for employment **AND** improved business and household income, which will lead to reduction in household poverty and food insecurity, which will result in **reduced poverty levels in rural communities**.